

## **permaramp**-joining support

### Instructions for use

Product codes: POHRJ, POWHRJ



*(Image shows Permaramp-Original High Rise kit with Permaramp-Quickrail handrails )*

#### **Before use**

- Remove all packaging and ensure the product has not been damaged in transit. Retain packaging.
- Carefully read the instructions and any warning texts before using the product.
- Keep instructions for reference.
- On each product you will find a label that shows the maximum permitted load.

RampCentre is a registered trademark of Enable Access, LU7 4UH. We undertake a policy of continual review and research, which may lead to changes in product appearance and specification. Date of Issue: 1 December 2023



Enable Access, Unit R, Cherrycourt Way, Leighton Buzzard, LU7 4UH, UK.



Enable Access Global Ltd, 27 Phibsboro Place, Dublin 7, D07 V20, Republic of Ireland

**For technical support or details on your nearest stockist please call 020 8275 0375**

**Enable Access**

Unit R | Cherrycourt Way | Leighton Buzzard | LU7 4UH | UK

T: +44 (0)20 8275 0375 E: [sales@enable-access.com](mailto:sales@enable-access.com)

W: [www.enable-access.com](http://www.enable-access.com)

## permaramp-joining support

### Instructions for use

Product codes: POHRJ, POWHRJ

#### Contents

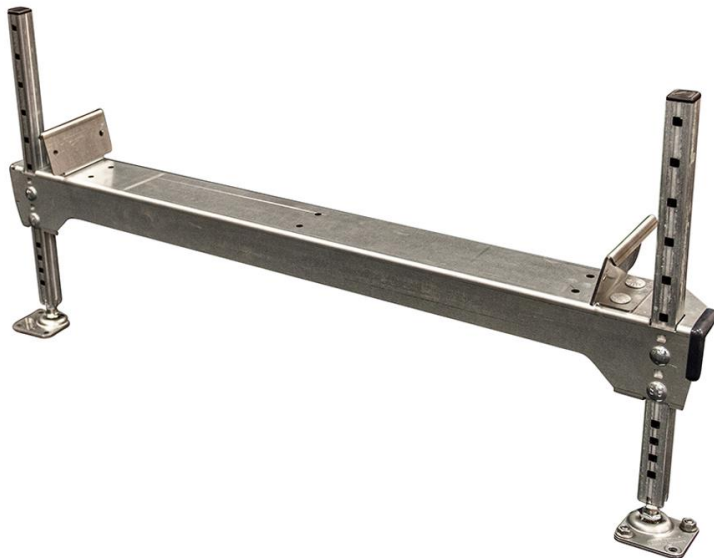
- 1 x joiner beam, 2 x joiner kerbs, 2 x joiner end caps, 2 x adjustable legs, 2 x adjustable feet, 17 x M8 nuts, 17 x M8x25mm bolts, 2 x ramp pegs, 13mm tube spanner, tommy bar for tube spanner, 1 x end support, 2 x M10 rubber feet, 4 x M10 lock nuts, 2 x M8 nyloc nuts, 2 x M8x55mm coach bolts

#### To Assemble

1. Begin by fitting the end support at the foot of the lower ramp as shown. Attach using the M8 coach bolts and M8 nyloc nuts:



2. Insert adjustable feet into end support and secure using M10 nuts as above.
3. Assemble the Permaramp High Rise joiner as shown in the following image, and set the height of the joiner to half the total threshold height:



4. Place the assembled joiner at the distance of one of the ramps away from the threshold.

RampCentre is a registered trademark of Enable Access, LU7 4UH. We undertake a policy of continual review and research, which may lead to changes in product appearance and specification. Date of Issue: 1 December 2023



Enable Access, Unit R, Cherrycourt Way, Leighton Buzzard, LU7 4UH, UK.



Enable Access Global Ltd, 27 Phibsboro Place, Dublin 7, D07 V20, Republic of Ireland

**For technical support or details on your nearest stockist please call 020 8275 0375**

Enable Access

Unit R | Cherrycourt Way | Leighton Buzzard | LU7 4UH | UK

T: +44 (0)20 8275 0375 E: sales@enable-access.com

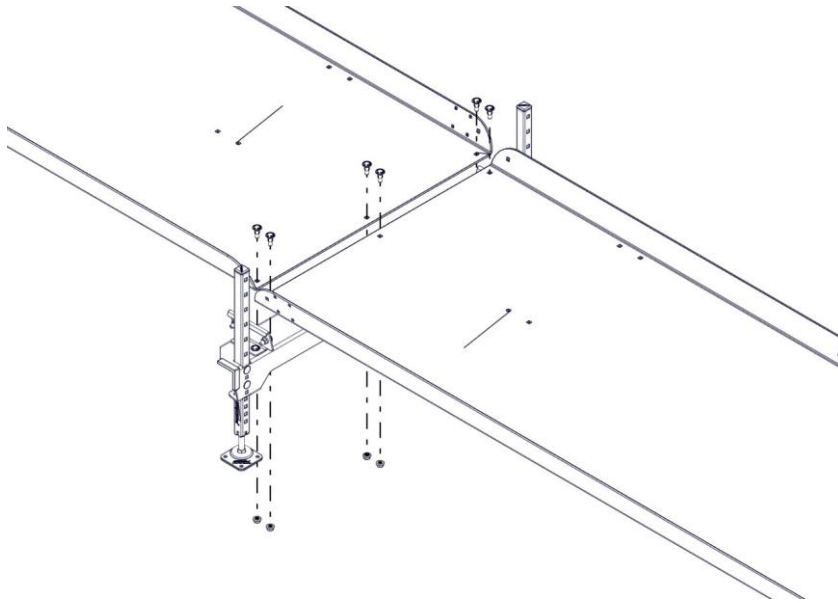
W: www.enable-access.com

## permaramp-joining support

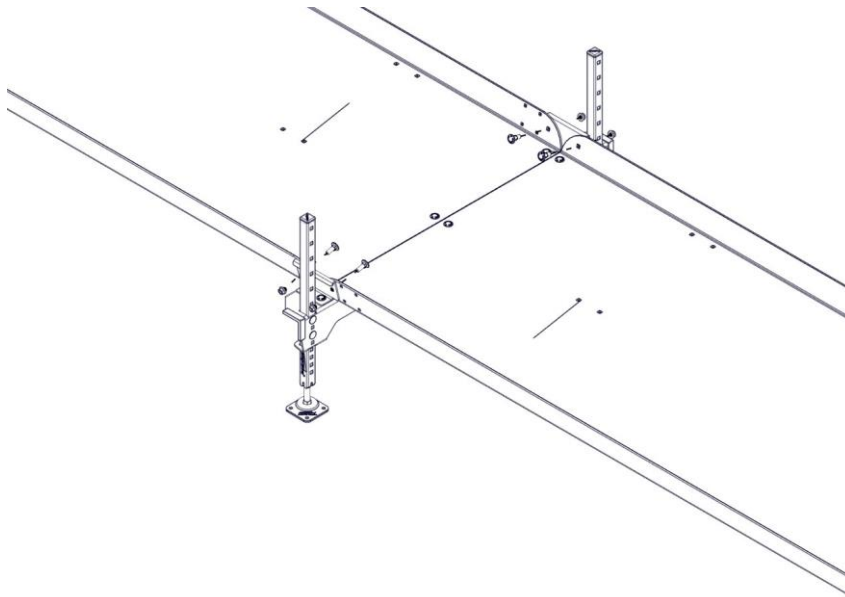
### Instructions for use

Product codes: POHRJ, POWHRJ

- Next, attach the two ramps to the joiner, fitting the lower ramp first for ease of assembly, as per the following diagram:



- Insert the final fixings through the kerb of the joiner and through the kerb of the Permaramp:



RampCentre is a registered trademark of Enable Access, LU7 4UH. We undertake a policy of continual review and research, which may lead to changes in product appearance and specification. Date of Issue: 1 December 2023



Enable Access, Unit R, Cherrycourt Way, Leighton Buzzard, LU7 4UH, UK.



Enable Access Global Ltd, 27 Phibsboro Place, Dublin 7, D07 V20, Republic of Ireland

**For technical support or details on your nearest stockist please call 020 8275 0375**

**Enable Access**

Unit R | Cherrycourt Way | Leighton Buzzard | LU7 4UH | UK

T: +44 (0)20 8275 0375 E: sales@enable-access.com

W: www.enable-access.com



## permaramp-joining support

### Instructions for use

Product codes: POHRJ, POWHRJ

7. If the kit supplied includes the Permaramp-Adjust ramp with self-supporting leg and spine kit, the Permaramp-Adjust leg and spine kit can now be fitted at the top of the ramp assembly, as per the main Permaramp assembly instructions.
8. Fine adjustment of the joining support can now be achieved with the adjustable feet, to ensure an even gradient all the way up the ramp. When securing the adjustable feet of the joining support in position, the bottom foot plate is positioned on the ground with the leg bolt resting in the plate, and a spanner can be used on the bolt for final height adjustment.
9. Once the ramps have an even gradient all the way up, it is important to ensure the top plate of each foot is bolted down through the bottom plate into the ground, which tightens the bolt in place. The lock nut is then tightened **upwards** to the underneath of the leg.
10. If Permaramp-Quickrail handrails are being used, these should now be fitted as per the Permaramp-Quickrail assembly instructions (supplied separately).
11. Finally attach the handrail joining brackets that hold the two handrails together, as seen in the following image. Ensure that they are facing outwards to avoid any sharp corners on the inside of the ramp.



#### Maintenance

- If the product becomes damaged in any way it should not be used (contact supplier/manufacturer).
- The product may be cleaned with normal cleaning products and left to dry before use.

#### Warranty

- The product carries a comprehensive 2-year warranty for normal use, conditions apply.
- Use other than published/intended will void the warranty.
- Any modification/repair other than by manufacturer will void the warranty.



RampCentre is a registered trademark of Enable Access, LU7 4UH. We undertake a policy of continual review and research, which may lead to changes in product appearance and specification. Date of Issue: 1 December 2023



Enable Access, Unit R, Cherrycourt Way, Leighton Buzzard, LU7 4UH, UK.



Enable Access Global Ltd, 27 Phibsboro Place, Dublin 7, D07 V20, Republic of Ireland

**For technical support or details on your nearest stockist please call 020 8275 0375**



Celebrating over  
**20 YEARS**  
of better access  
for better living



## **permaramp**-joining support

### Instructions for use

**Product codes:** POHRJ, POWHRJ

#### **Accessories Available** (contact supplier/manufacturer to order)

- Permaramp-Quickrail handrails
- Permaramp-entry flap accessory
- Rubber feet accessory for indoor use
- Soft ground leg bearers for grass, flower beds, gravel, etc.

RampCentre is a registered trademark of Enable Access, LU7 4UH. We undertake a policy of continual review and research, which may lead to changes in product appearance and specification. Date of Issue: 1 December 2023



Enable Access, Unit R, Cherrycourt Way, Leighton Buzzard, LU7 4UH, UK.



Enable Access Global Ltd, 27 Phibsboro Place, Dublin 7, D07 V20, Republic of Ireland

**For technical support or details on your nearest stockist please call 020 8275 0375**

**Enable Access**

Unit R | Cherrycourt Way | Leighton Buzzard | LU7 4UH | UK

**T:** +44 (0)20 8275 0375 **E:** [sales@enable-access.com](mailto:sales@enable-access.com)

**W:** [www.enable-access.com](http://www.enable-access.com)



VAT Reg. No. GB 894 0149 09. Enable Access Ltd. Registered in England and Wales No. 10945974. Registered Office: As Above.