

doorline-variwedge™ Medium* (DVWM)

*4 Sizes available; small, medium, large and extra-large for thresholds up to 15cm (6 inches) high



rampCENTRE™

Intended Purpose: These ramps are intended to be used as a wheelchair accessory for persons with disabilities to navigate areas of different heights.

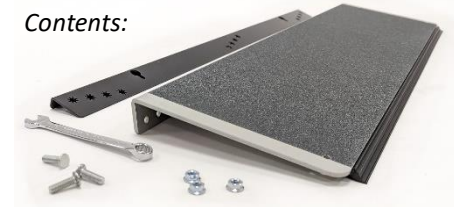
Before use: Remove and retain all packaging. • Read the instructions fully before using ramps. • Ensure the surface is firm, stable and able to bear the intended load • The capacity of the ramp is 350kg (55st). ⚠ Note: The ramps may have sharp edges; wear gloves while assembling.

Check and familiarise yourself with the contents: 1x Variwedge Medium ramp c/w Gripline floor grip and protection, 1x Variwedge Medium leg, 3x Variwedge flush bolts, 3x Variwedge flange nuts, 1x 10mm spanner

Set up

- Measure the height of the threshold and choose the suited configuration (fig 1.)
 - Please note, the leg is not used for the lowest setting. Retain with fixings for future re-use/adjustment.
- Assemble Variwedge ramp and leg as required.
 - Please note, the 4cm (1.6") setting uses the lowest flush bolt holes in the leg and the highest 5.5cm (2.2") setting uses the highest flush bolt holes in the leg. Height settings are in 0.5cm increments.
 - Insert the flush bolt into relevant the hole at one end of the leg. (fig 2.)
 - Insert the protruding bolt into the corresponding hole in the back face of the ramp. (fig 3.)
 - Screw the flange nut onto this bolt and hand tighten. (fig 4.)
 - Insert the midway and end flush bolts through the corresponding holes (ensuring ramp and leg are parallel), add and hand tighten the flange nut. (fig 4.)
 - Tighten all 3 nuts with the spanner provided.
- Position/fix the ramp as required.
 - Ensure the ramp surface is clean prior to application.
 - There are 2 holes in the surface of the ramp for fixing as required (fixings not supplied).
 - The ramp and leg have keyholes that can be used to locate the ramp from correctly spaced screws in the threshold.

Contents:



Maintenance: If the ramps become damaged or slippery in any way they should not be used. The ramps may be cleaned with normal cleaning products

Recycling: If you no longer require this product, please liaise with a metals recycling contractor. If this product was loaned to you by a local authority, please contact them to discuss its removal from your property.

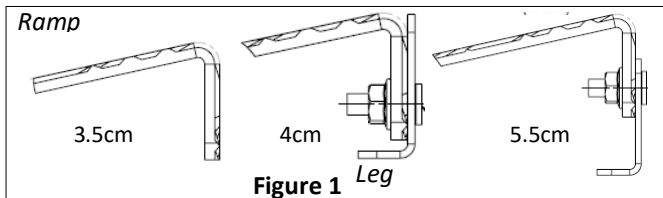


Figure 1

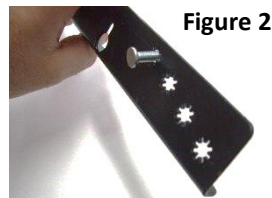


Figure 2



Figure 3

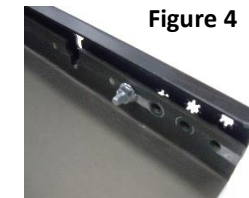


Figure 4



WARRANTY VOID IF LABEL REMOVED OR ILLEGIBLE. UK Patent Application No. 1404579.3 & (European) Registered Community Design No: 002434290/1/3/6. RampCentre is a registered trademark of Enable Access, LU7 4UH. We undertake a policy of continual review and research, which may lead to changes in product appearance and specification. Date of Issue: 02 June 2023. Enable Access, Unit R, Cherrycourt Way, Leighton Buzzard, LU7 4UH, UK. EC REP Enable Access Global Ltd, 27 Phibsboro Place, Dublin 7, D07 V20, Republic of Ireland. For technical support or details on your nearest stockist please call 020 8275 0375.